



# **PAN AMERICAN AIRWAYS SYSTEM**

*December 1933*



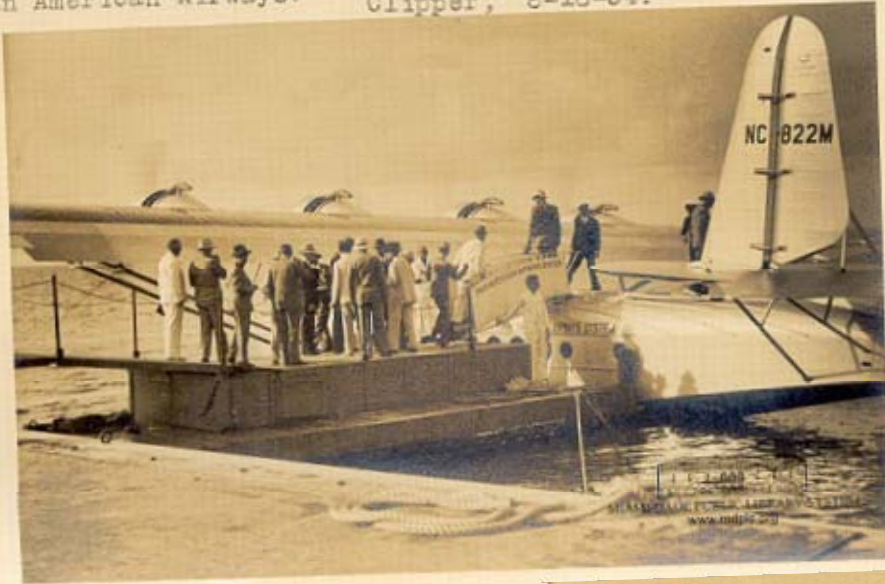
⊙ Overnight Stops

Pan American Airways. 10-27-35. Crowd at ramp, watching China Clipper. 607g

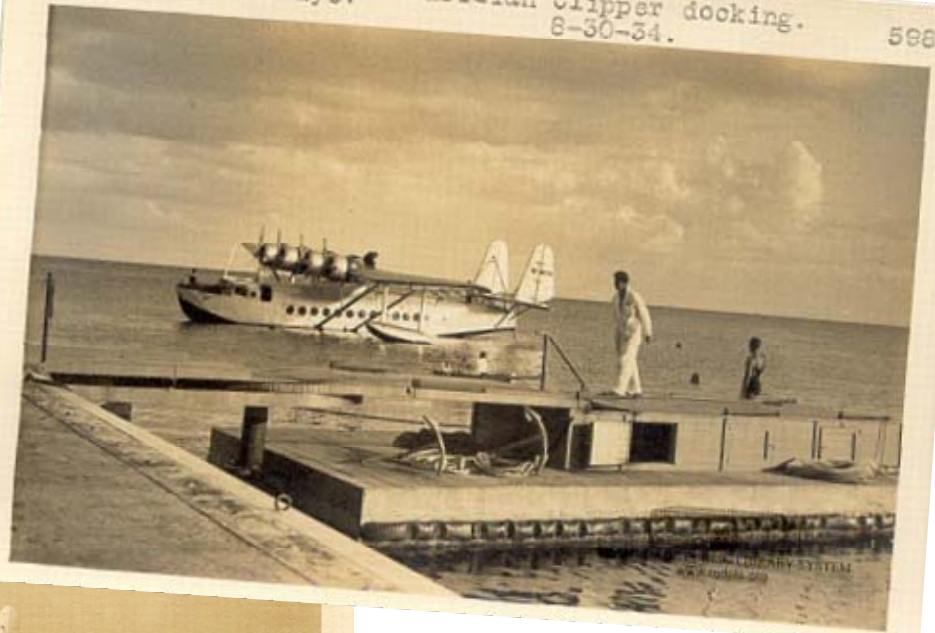




Pan American Airways. Passengers boarding Brazilian Clipper, 8-18-34. 598c



Pan American Airways. Brazilian Clipper docking. 8-30-34. 598h



Brazilian C  
Maiden tr



Pan American Airways. Return of Brazilian Clipper. 8-30-34. 598g



Passengers leaving Brazilian Clipper, 8-30-34. 598k

